

Product Specs

# HEIGHT ADJUSTABLE COLUMN KIT



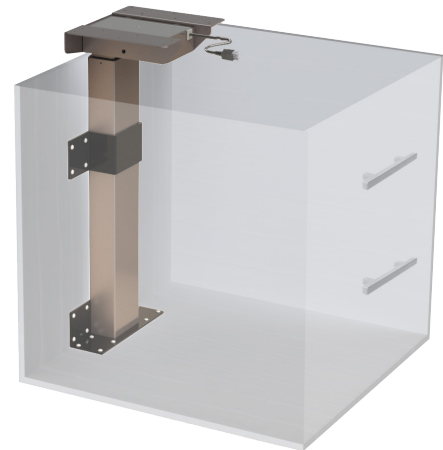
Our Height Adjustable Column Kit comes ready-to-use right out of the box. Connect the column and handswitch to our control box for instant ergonomic use in a variety of settings. Everything you need to operate is included.

Standard mounting locations, easy set-up and rigid construction make our Height Adjustable Column Kit configurable to any application. Columns can be integrated into casegoods, concealed within decorative paneling, wall-mounted as part of drop-in workstations and multiple columns can even be synchronized to lift a large tabletop. The possibilities are endless!

## FEATURES

- ✔ Minimum order quantity of 100
- ✔ Over 150 color options
- ✔ Integrated intelligent system protection (ISP)
- ✔ Rated at 200 lb. load per two-column kit

*Feet, top supports and j-rails not included.*



## ADDITIONAL INFORMATION

- Single, two, three and four column parallel systems
- Motor box can be mounted to bottom and to the floor
- 9 ft. power cord, control box, motors and handswitches all included
- Can be used in a variety of applications
- Tables fully assembled using additional OMT-Veyhl components such as feet, j-rails and top supports meet BIFMA standards and are UL 962 approved
- Hall sensor enabled parallel driving
- Less than 50db noise level using ISO-11201:2010 acoustics
- Multiple handswitch and color options available
- Available in square or rectangular columns
- Dual stage high meets BIFMA's Ergonomics Guidelines for Furniture Used in Office Work Spaces
- Single box or bulk packaging

## OPTIONS

### HANDSWITCH OPTIONS



TOUCHbasic



TOUCHinlay  
(upgrade)

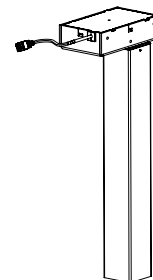


TOUCHFX  
(upgrade)

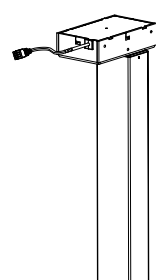
### POWDER COAT COLOR OPTIONS

150+ colors available.

### COLUMN OPTIONS



Square Column



Rectangular Column

### WARRANTY INFORMATION

**Two Years** Electronic components such as control boxes, handswitches, motors.

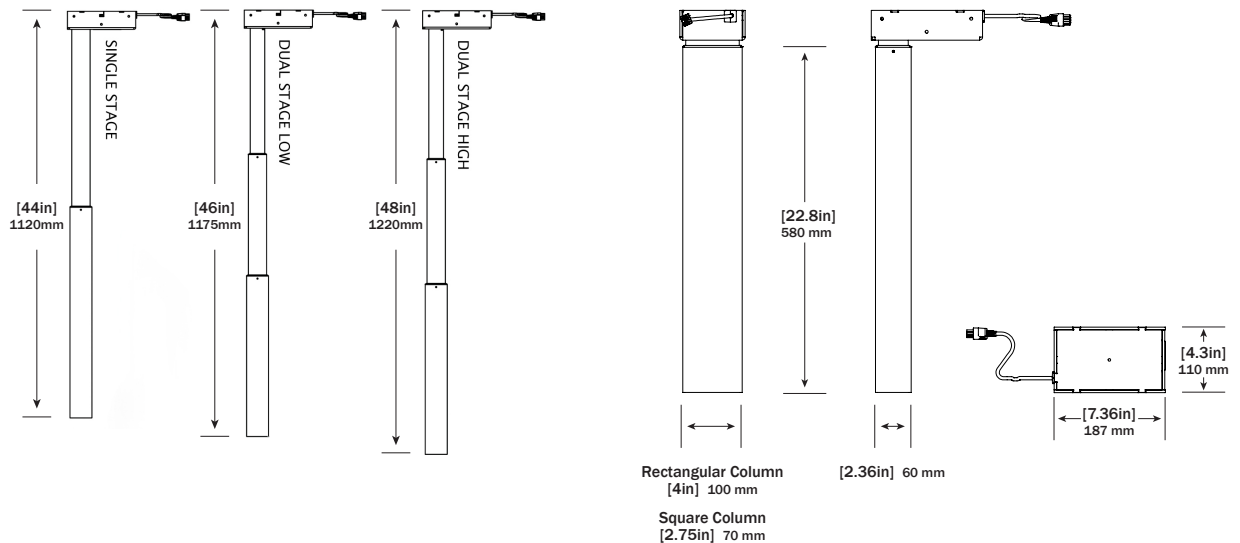
**Five Years** Mechanical components such as crank drives, spindles.

## TECHNICAL SPECIFICATIONS

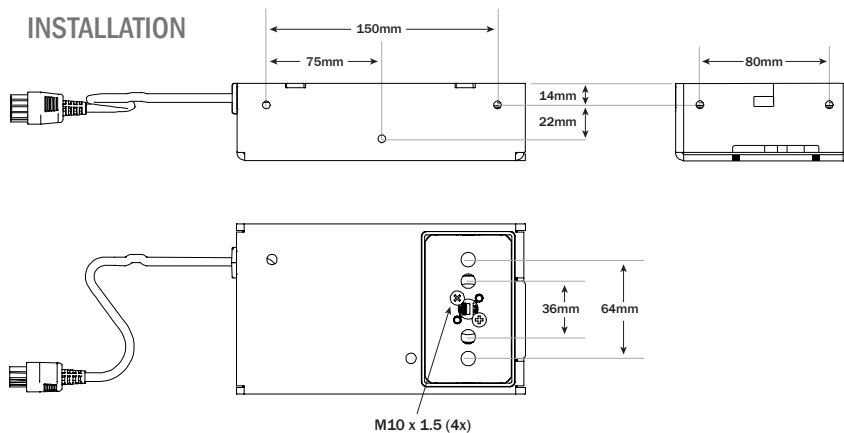
TYPE	STROKE LENGTH (IN)	HEIGHT MIN / MAX (IN)	TRAVEL SPEED (IN/sec)	MAX WEIGHT PER 2 LEGS (LB)	NOISE LEVEL (DB)
Single Stage	18.9	25/44	1.5	200	<50
Dual Stage Low	26	20/46	1.5	200	<50
Dual Stage High	26.7	21/48	1.5	200	<50

## DRAWING

### Standard Dimensions



## INSTALLATION



11511 James Street • Holland, MI 49424 • 616.738.6688 • omt-veyhl.com

**Terms of Use:** The user is responsible for determining the suitability of OMT-Veyhl products for specific applications. © OMT-Veyhl 2017

**BUILT  
IN THE USA**

v 080118