

OMT-Veyhl Powder Coat Samples

2019: DESIGN BOOK

2019: COLOR & DESIGN TRENDS

In preparation for this year’s design book, we explored color and material trends in the fashion industry around the world. Why fashion? Because these trends generally lead the way for other industries, and adopting them gives architects and designers the tools they need to create forward-thinking spaces that support today’s work styles.

So what did we find? Current trends are fusing showy metallics with solid colors in a variety of finishes and gloss levels. With that in mind, we designed this year’s book to inspire you with full color and material palettes that incorporate our extensive powder coat offering. Named after strong ladies in pop culture and literature, these palettes represent different design personalities and illustrate how powder coat can be used to support unique space types.

Whether you use this book as a guideline or a springboard, we hope it opens up a new world of possibilities. Black, white, silver? Sure. But why not mix it up?

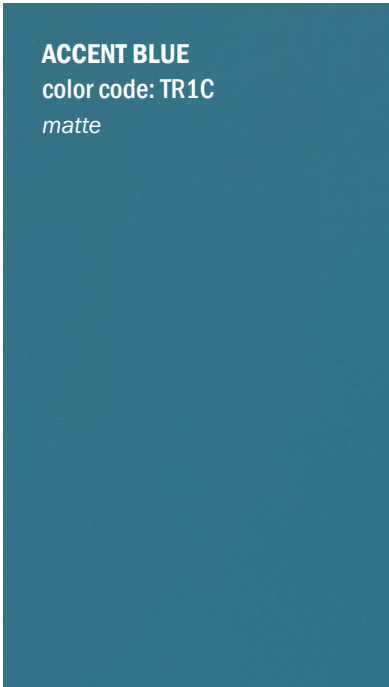
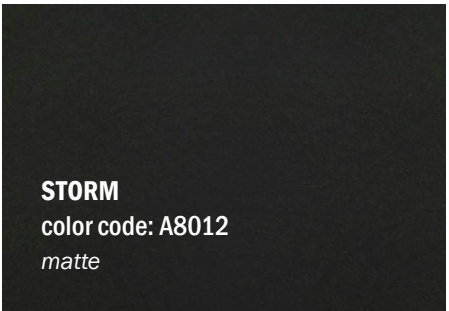
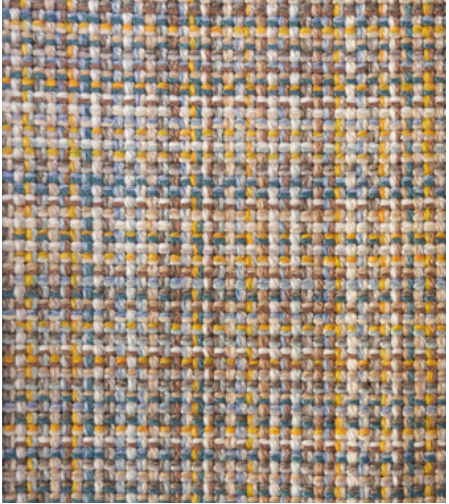
 **PREMIUM COLOR**
Upcharge and minimum order quantity requirements may apply. Contact your sales rep for a quote.

**Certain textured and metallic options cannot be applied to the inner columns of our height-adjustable products and require a complimentary color.*



OLENNA

Named after a fierce (yet fictional) queen, this color palette is calm, cool and collected...but don't overlook that flash of glam and that touch of fire inside. Here's a cup of tea, but don't you dare spill it on my sofa.

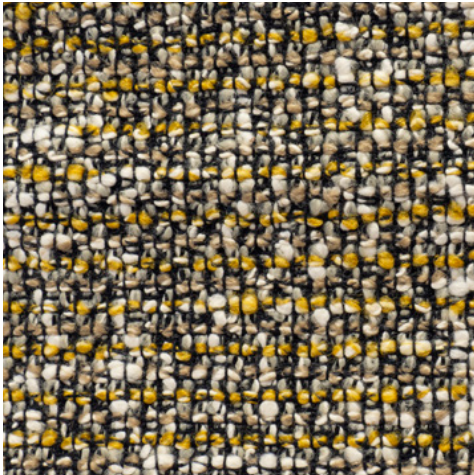


DESIGN PRO TIP: Create interest by mixing different sheen levels. Combining metallics with a mix of other matte and gloss finishes gives hard surfaces a more approachable, textural feel.

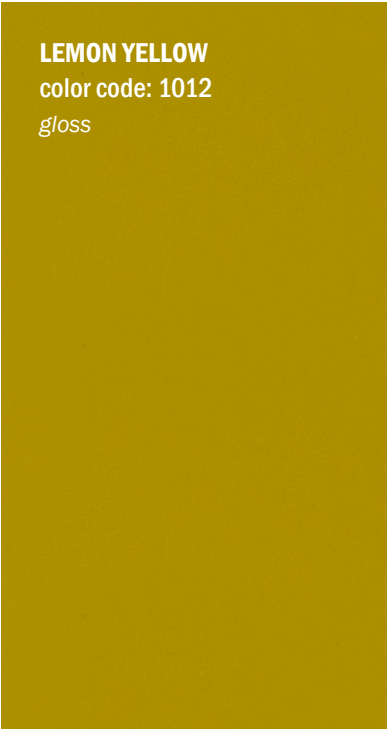


CAROL

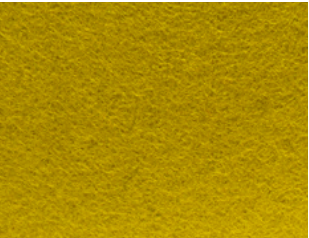
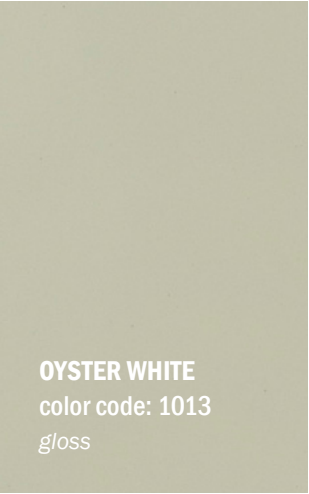
Cheerful and unforgettable, just like the matriarch of the 1970's that we all know and love. How do you juggle drama like this mama and still keep a smile on your face? Surrounded by this sunny color palette, of course!



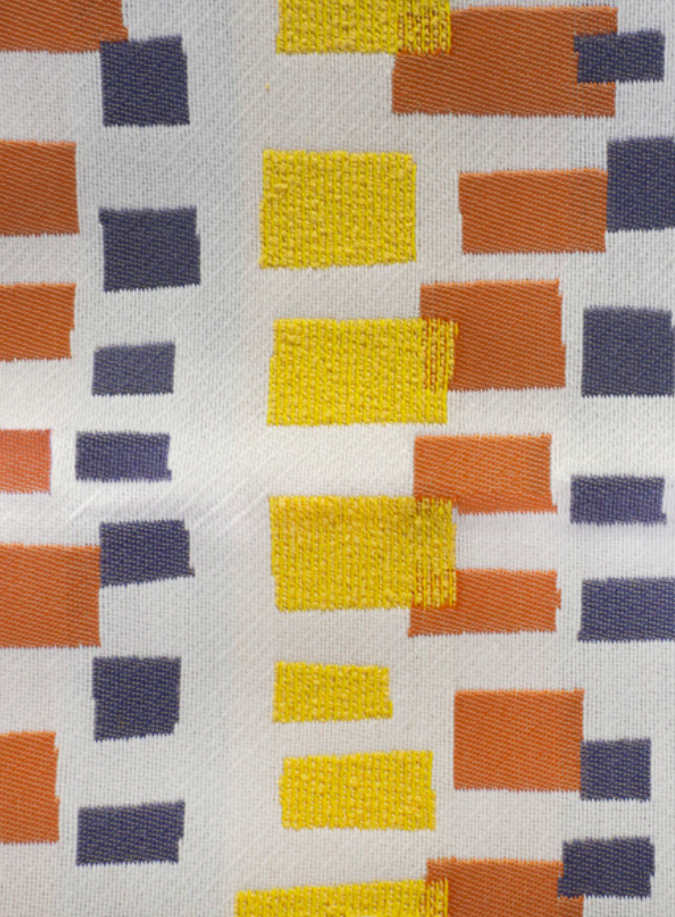
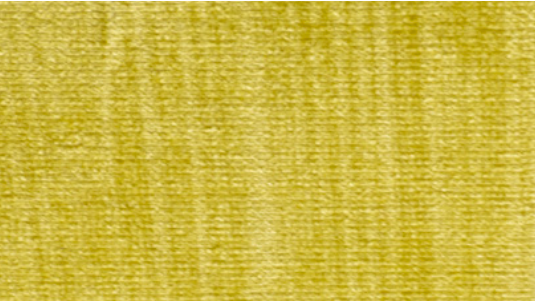
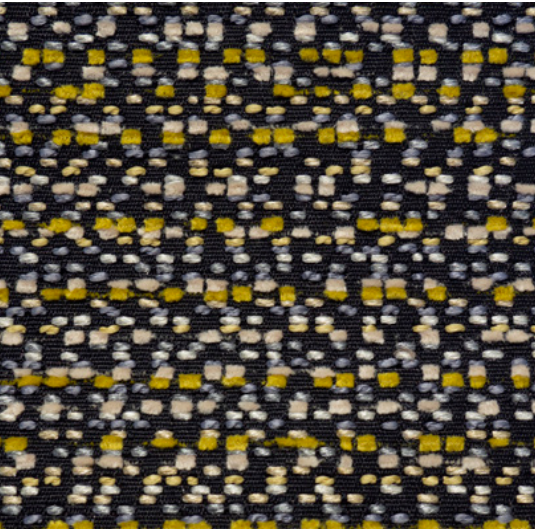
LEMON YELLOW
color code: 1012
gloss



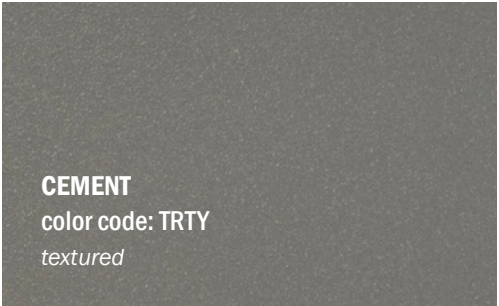
OYSTER WHITE
color code: 1013
gloss



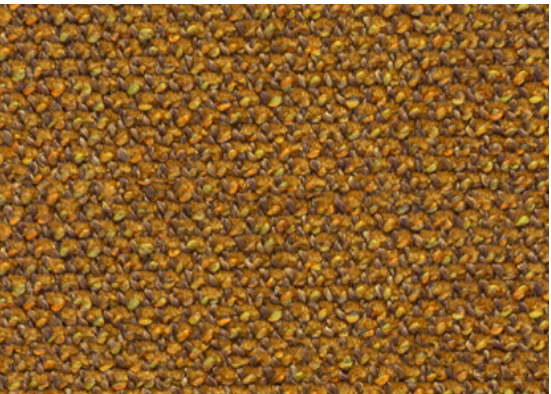
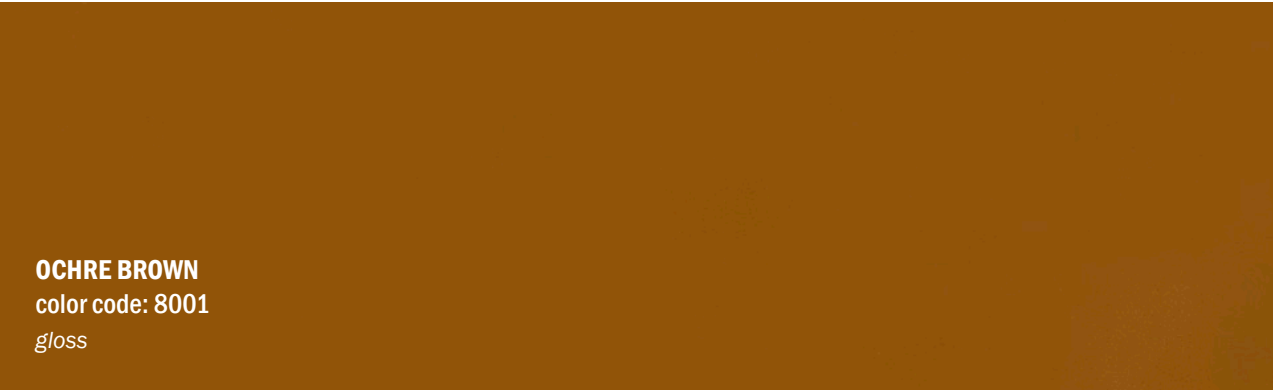
MEDIUM TONE
color code: MT
matte



CEMENT
color code: TRTY
textured



OCHRE BROWN
color code: 8001
gloss



NEED TO SEE IT IN PERSON?
Contact your salesperson to order
a powder coat sample ring.



DIANA

Strong and bold (and maybe even a little superhuman), this family of colors creates an environment in which you can't help but feel motivated and ready to take on anything. Start practicing your golden lasso skills!

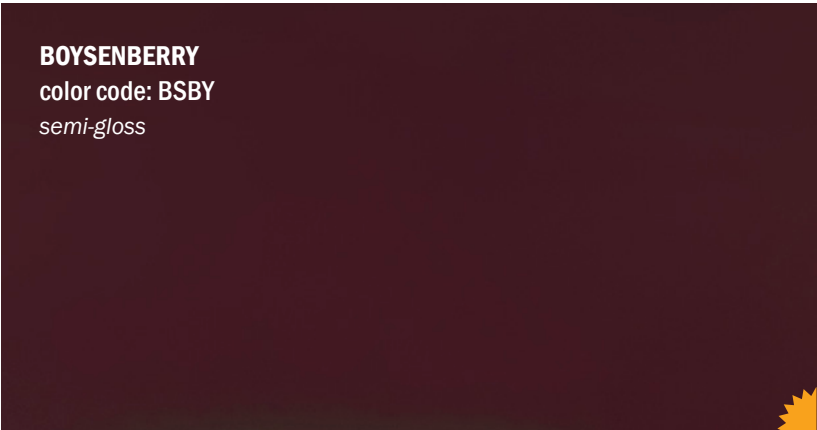
BEIGE
color code: BEIGE C32
metallic



CORAL RED
color code: 3016
gloss



BOYSENBERRY
color code: BSBY
semi-gloss



TURQUOISE BLUE
color code: 5018
gloss



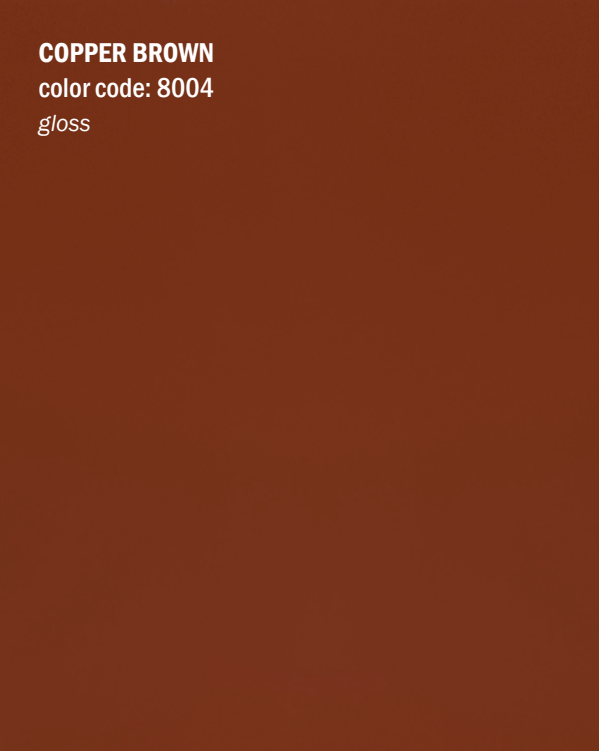
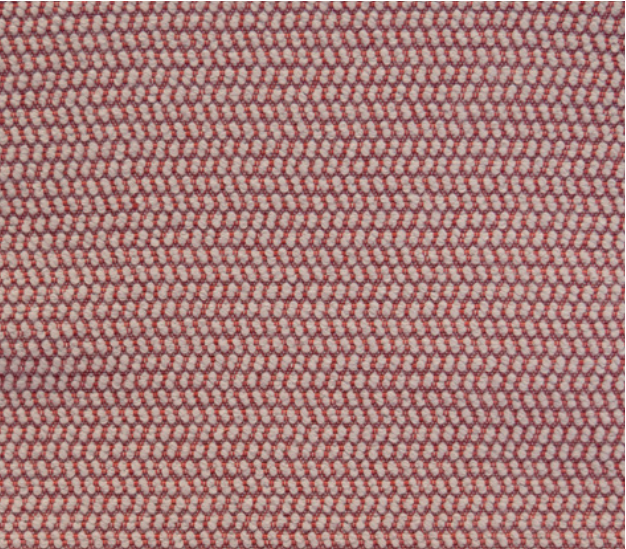
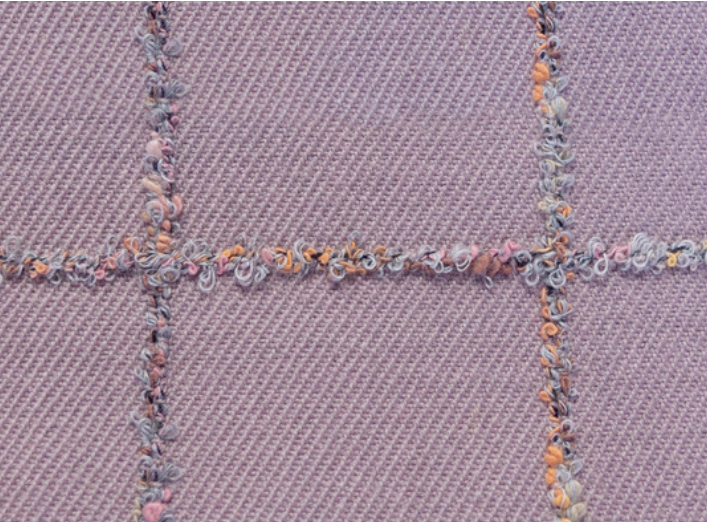
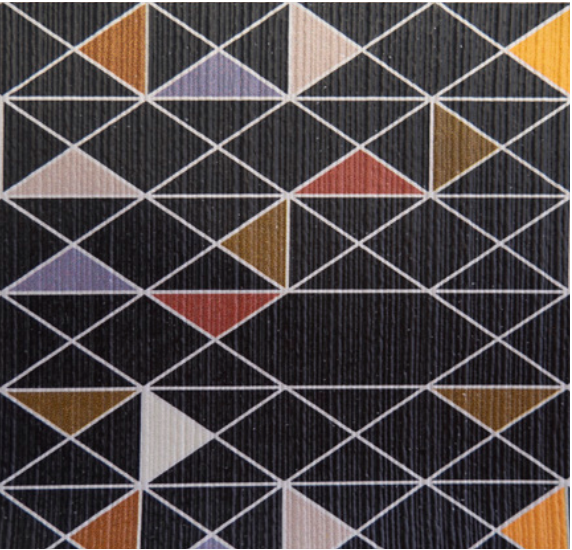
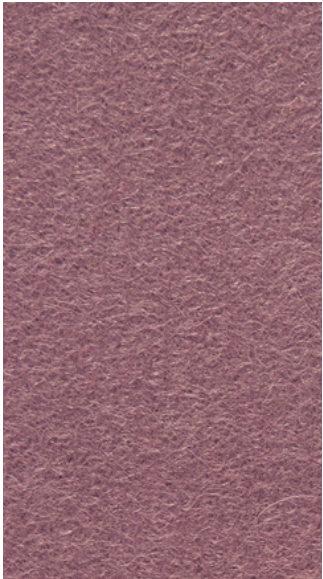
DESIGN PRO TIP: Use similar colors but play around with texture and high gloss to add a greater sense of depth to a space.

ALSO SHOWN Camira: Blazer "Goldsmith" CUZ39 | Knoll Textiles: Catwalk "Season" | DesignTex: Tweed Multi "Turquoise"
Momentum Textiles: Lella "Tuscan" | Camira: Blazer "Aston" CUZ02 | Knoll Textiles: Feeling Plaid "Feeling Enlightened"



DOLORES

Sensible British tweed and comfortable felt creates a soft, warm and welcoming environment. But, don't be fooled! This palette might be prim and proper but it's no pushover.





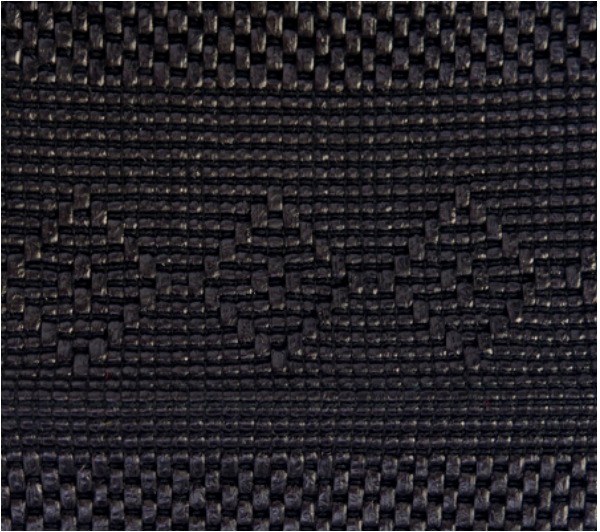
TINA

Daring and fearless, edgy and confident. Metallics take the spotlight in this combination of colors, and this one deserves to go platinum. It's simply the best (see what we did there?).

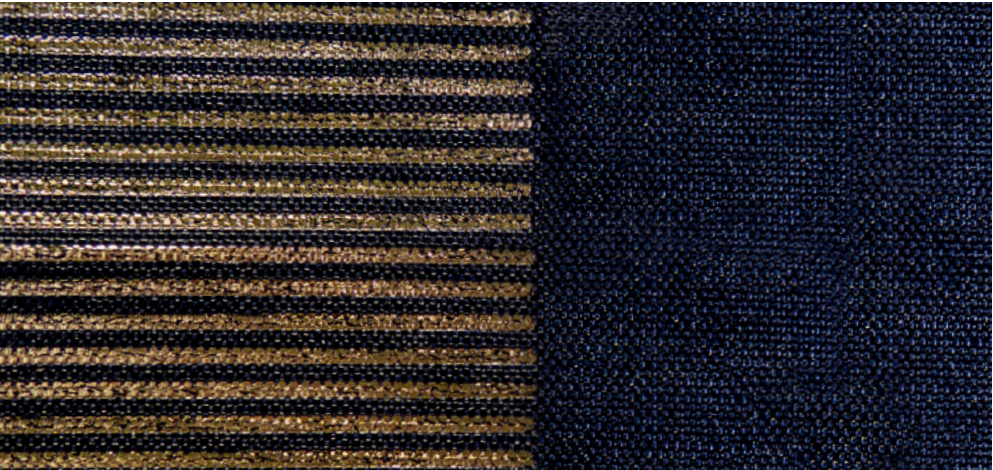
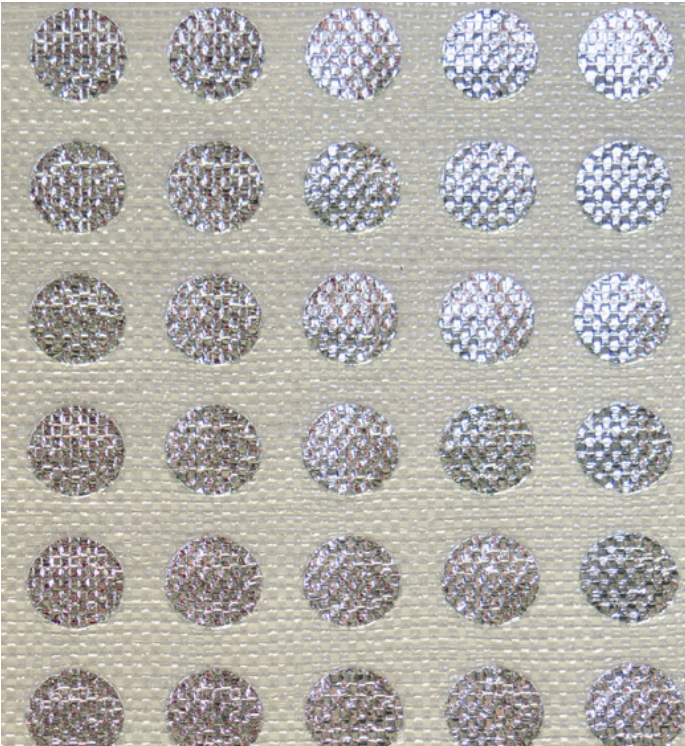
LIGHT TONE
color code: LT
matte

SATIN BRONZE
color code: A8011
metallic

GREY FROST
color code: FG
metallic textured



BUMPER BLACK
color code: B05
gloss



COOL GREY NEUTRAL
color code: TRAL
textured

DESIGN PRO TIP: Use the same color but vary the finish. Create a table base with a textured leg and a high gloss foot, or a tone-on-tone chair with a black textured fabric and glossy black frame.

ALSO SHOWN Carnegie: Xorel "Coco Couture" | Carnegie: Xorel "Moire Stripe Couture" | Carnegie: Xorel "Strie"
Knoll Textiles: Djenne "Black" | Momentum Textiles: Lella "Chess" | Kvadrat Maharam: "Coda"

Color Palette of the Year



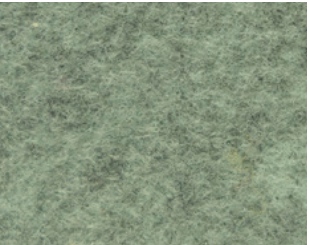
BELLA

Dark, powerful and enigmatic, we like this sophisticated combination of colors so much that we're naming this one our Color Palette of the Year. We hope to see a lot of this one in 2019 – just don't let it draw you to the dark side!

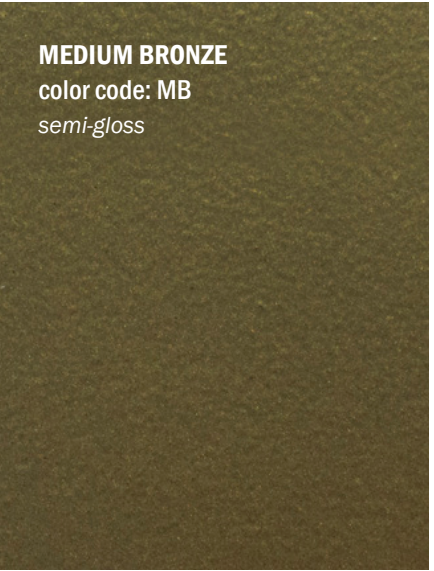
BLUE GREEN
color code: 6004
gloss



BEETLE
color code: BLM
semi-gloss



MEDIUM BRONZE
color code: MB
semi-gloss



NEED TO SEE IT IN PERSON?

Contact your salesperson to order a powder coat sample ring.



PAPYRUS WHITE
color code: 9018
gloss

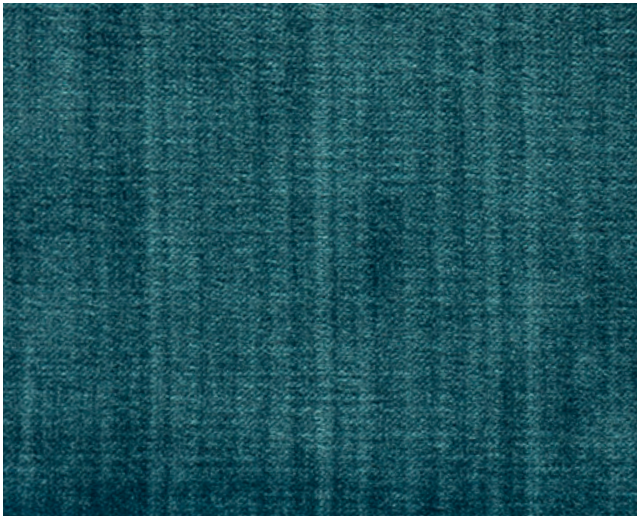
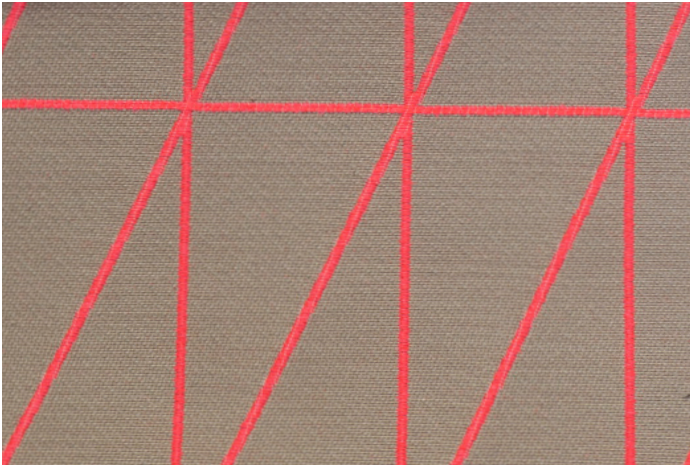




JACKIE

Optimistic, welcoming, and effortlessly chic; any environment will make all the best-dressed lists with this classy, iconic look.

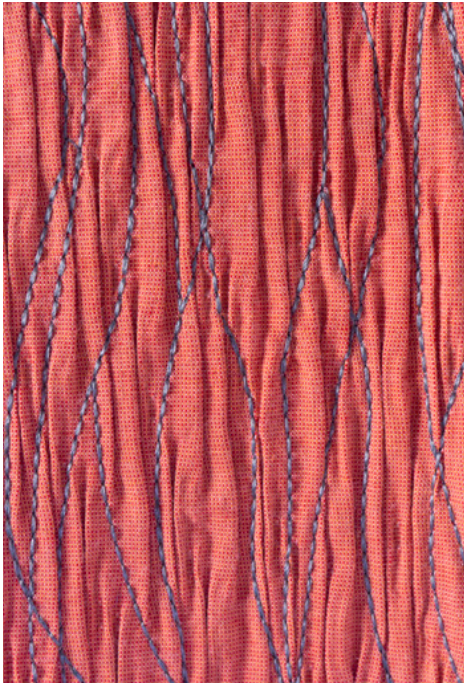
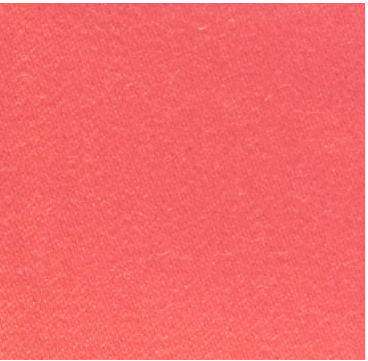
LIGHT GREY
color code: 7035
gloss



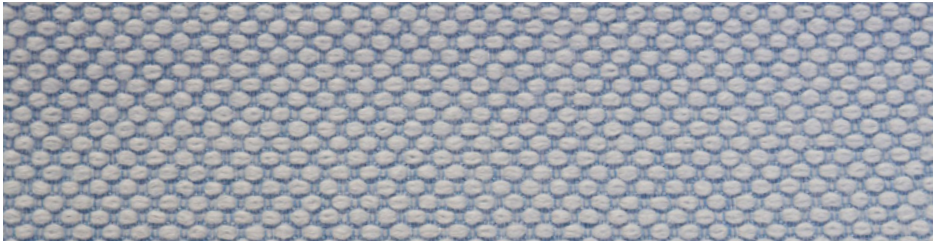
STRAWBERRY RED
color code: 3018
gloss



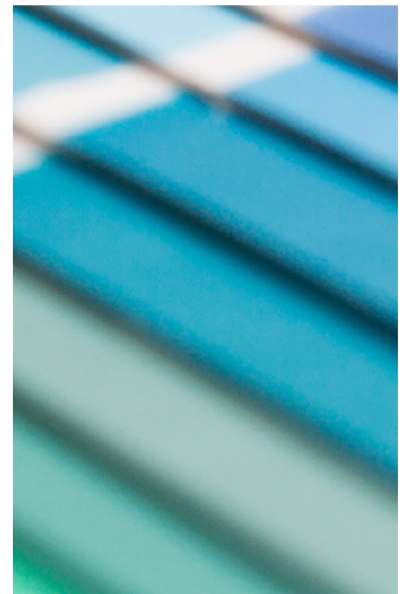
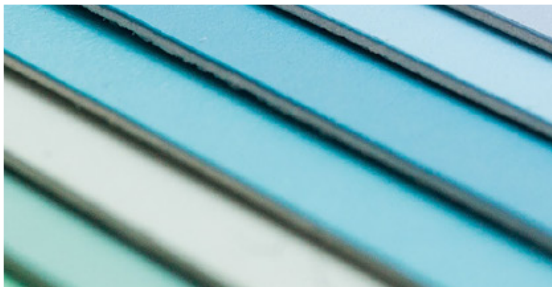
WATER BLUE
color code: 5021
gloss



WARM NEUTRAL GRAY
color code: WN
matte



ALSO SHOWN Textus: Sartorial "Pinkberry" | Textus: Classique "Aegean" | Maharam: Merit "Blizzard" | DesignTex: Colorful Plaid "Light Grey" | Textus: Felt Mélange "Cove"
Textus: Felt "Holly" | Sina Pearson: Landscape 472 "26 Amaranth" | Maharam: Bright Angle "003 Flamingo" | Textus: Lana "Daiquiri"



OMT  VEYHL®

11511 James Street
Holland, MI 49424
616.738.6688
omt-veyhl.com

© OMT-Veyhl 2019
v 022119